

MINE SWEEPER

HIGH SENSITIVITY FOR UNDERGROUND MINES DETECTION

Model MS - 82

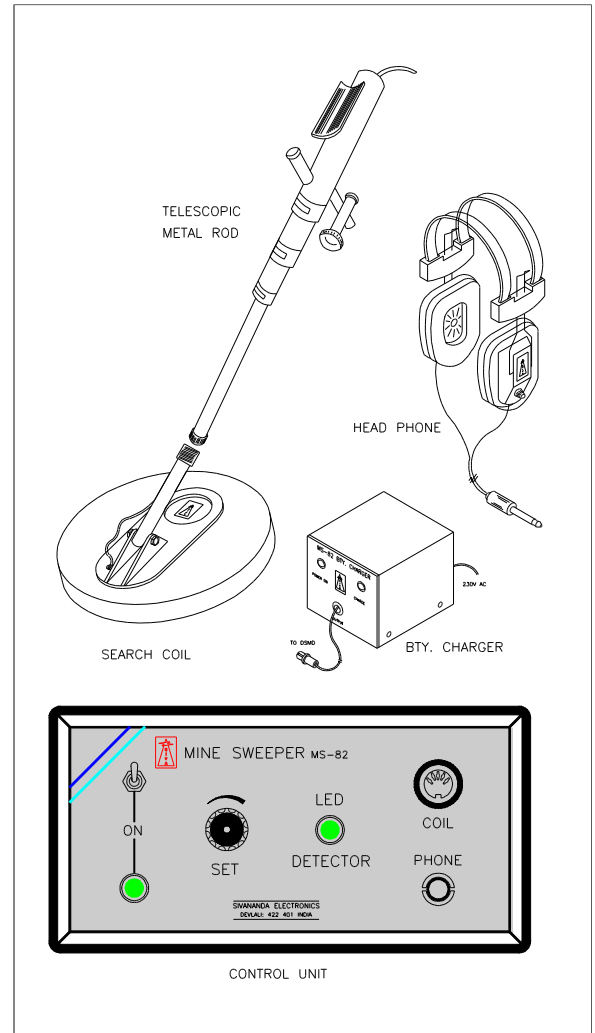
- 100 % Indigenous
- Ultra High Sensitivity
- Detects Firing Pins of APM.
- Eddy Current Principle
- Easy to Operate, Single Control Only.
- Audio & Visual Indication for detection of Mines.
- Light in weight .
- Search Coil with Telescopic metal rod assembly.
- Battery Charger provided.
- Suit case & Ruck Suck bag for transportation.

TECHNICAL SPECIFICATION

Operating Voltage	: 9V Single Battery.
Power	: Less than 2 Watt.
Indication	: Audio through Head Phone, Visual-LED.
Search Coil	: 8 inches diameter with telescopic metal rod assembly.
Weight	: Less than 5 Kg.
Sensitivity	: Firing Pin of APM is detected at 2 - 3 inches (underground) For large objects detection at 3 ft. (underground)

USERS : Indian Army , BSF , CRPF , Police ,Paramilitary forces.

Note:- To keep pace with latest technology SIVANANDA ELECTRONICS reserves the right to update the system, hence specifications are subject to change without any notice.



SIVANANDA ELECTRONICS

DEEPAK MAHAL, LAM ROAD, DEVLALI 422 401 (MAHARASHTRA)
TEL.: Factory-(0253) 2491816,2491423,2491504 Fax:- (0253)2492291
Mumbai-(022) 26796487,26786249,26792818 Fax-(022)26783113
Goa- (0834) 2555755, Fax- (0834) 2555702, CALCUTTA: (033) 23580759
TEL./FAX.New Delhi- (011) 26221582, 26204168-69 Fax- (011) 26446150

An ISO 9001 Company



International Standards Certification
Lic. No. QAC/801/0859